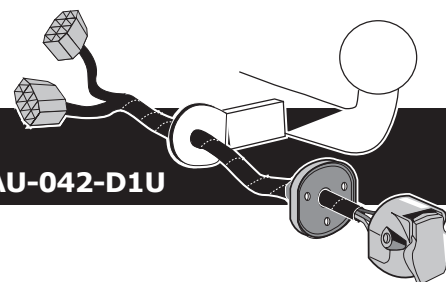


Only for Audi's with towbar preparation

**Audi A4 Sedan (8K2) & A4 Avant (8K5) 2008- / A4 Allroad 2009- & 2013-  
A5 Coupé (8T3) 2007- & 2012- / A5 Cabrio (8F) 2009- & 2012-  
A5 Sportback (8T2) 2009- & 2012-**

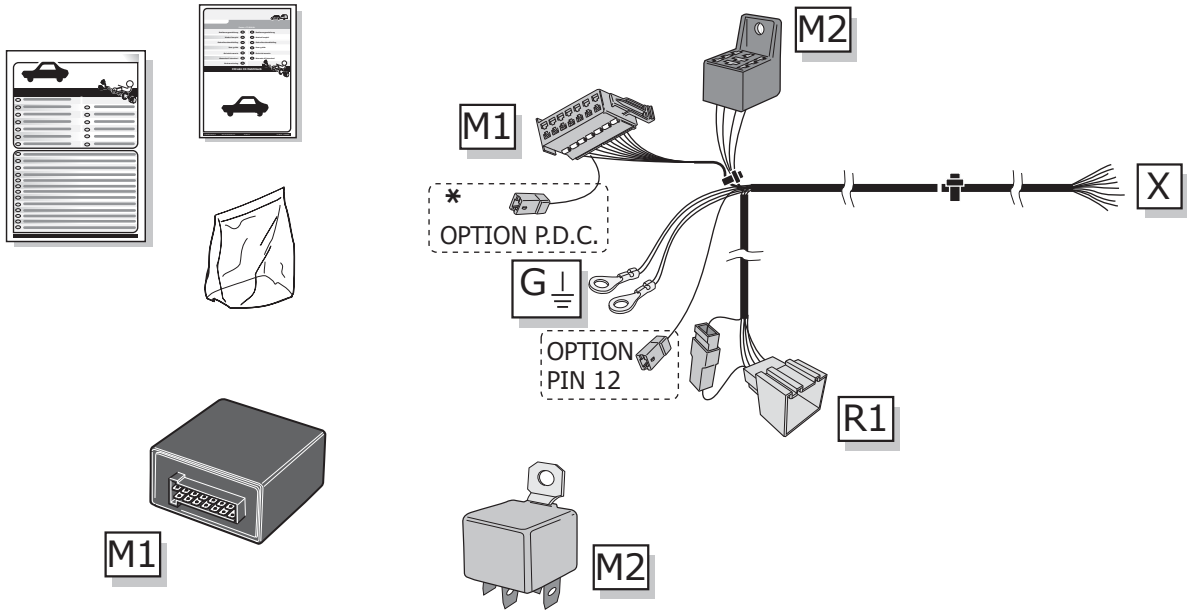
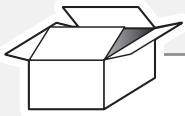
**Partnr.: AU-042-D1U**



- Fitting instructions electric wiring kit tow bar with 13-P socket up to DIN/ISO Norm 11446.
- We would expressly point out that assembly not carried out properly by a competent installer will result in cancellation of any right to damage compensation, in particular those arising by virtue of the product liability act.
- Contents of these kits and their fitting manuals are subject to alteration without notice, please ensure that these instructions are read and fully understood before commencing installation.
- Do not overload circuits; the maximum loads per connection are detailed in this manual.
- Attention! Before Installation, please read this manual carefully and inform your customer to consult the vehicle owners manual to check for any vehicle modifications required before towing.
- In the event of functional problems, troubleshooting must be limited to about 0.5 hours, contact the technical support:  
[ukts@ecs-electronics.com](mailto:ukts@ecs-electronics.com) / 07440 202 052.



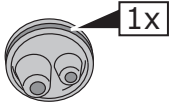
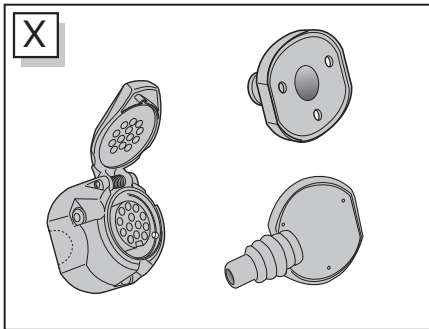
# Part list



M1

M2

R1



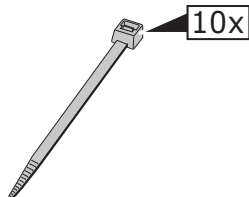
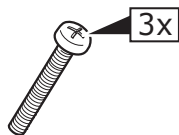
**Option! \***

PARK DISTANCE CONTROL

↓

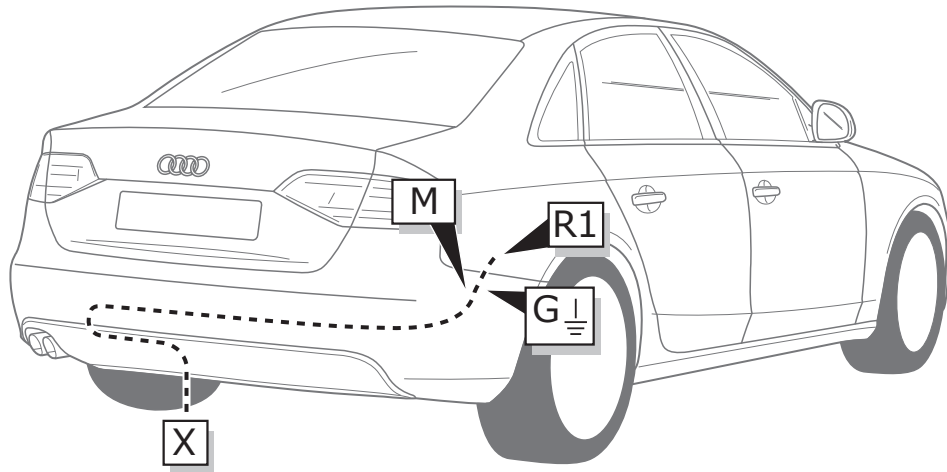
PARK DISTANCE CONTROL

For not OEM P.D.C. System  
use the: VW-083-ZZ



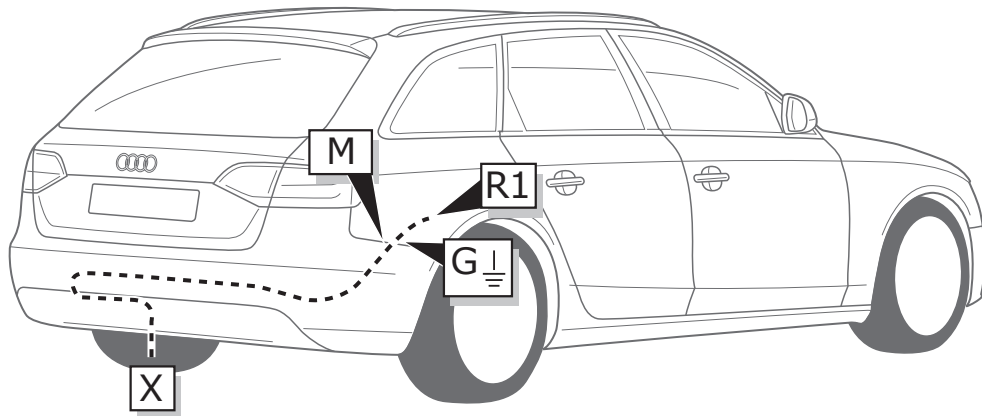
## Audi A4

### ROUTING



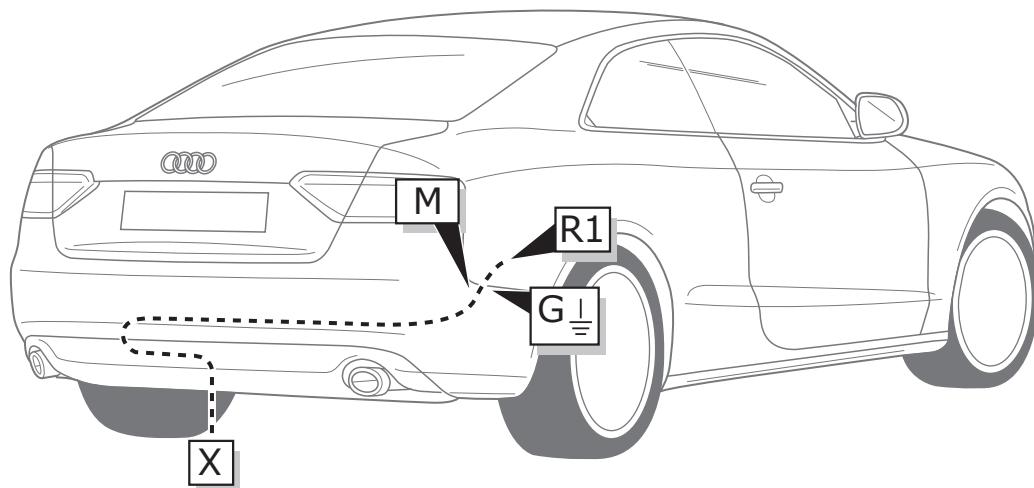
## Audi A4 Avant / A4 Allroad

### ROUTING

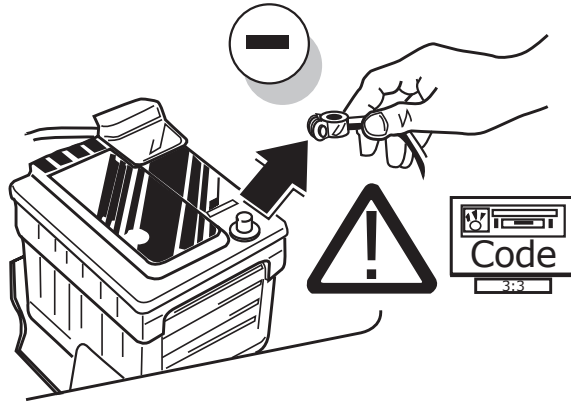


## Audi A5

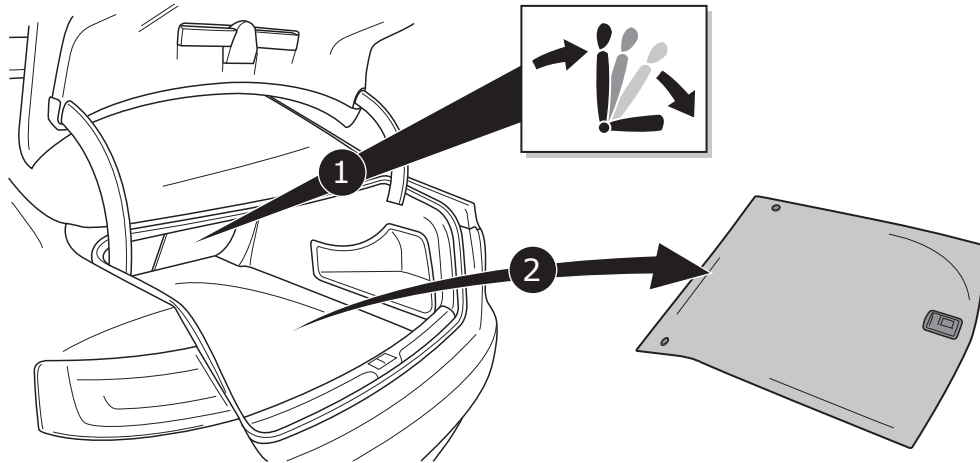
### ROUTING



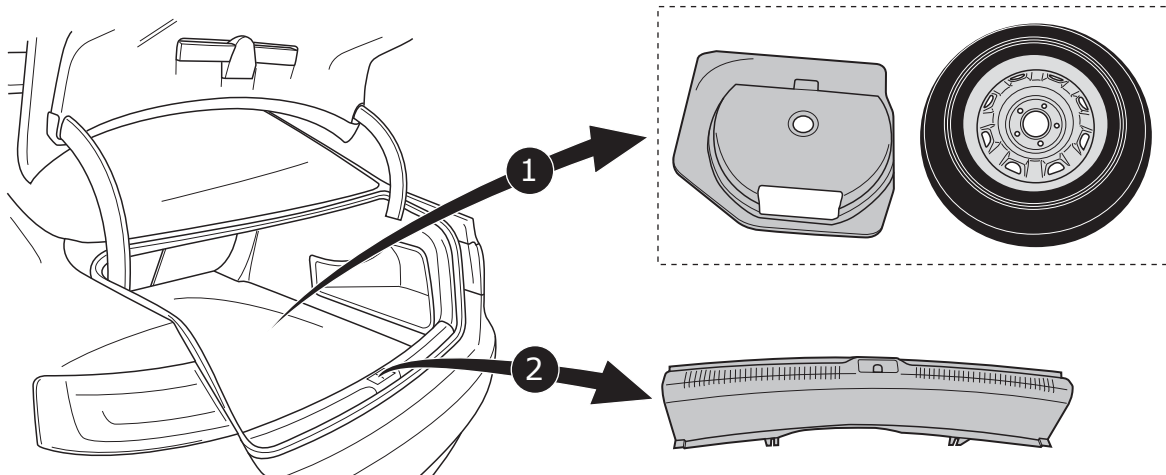
1



2

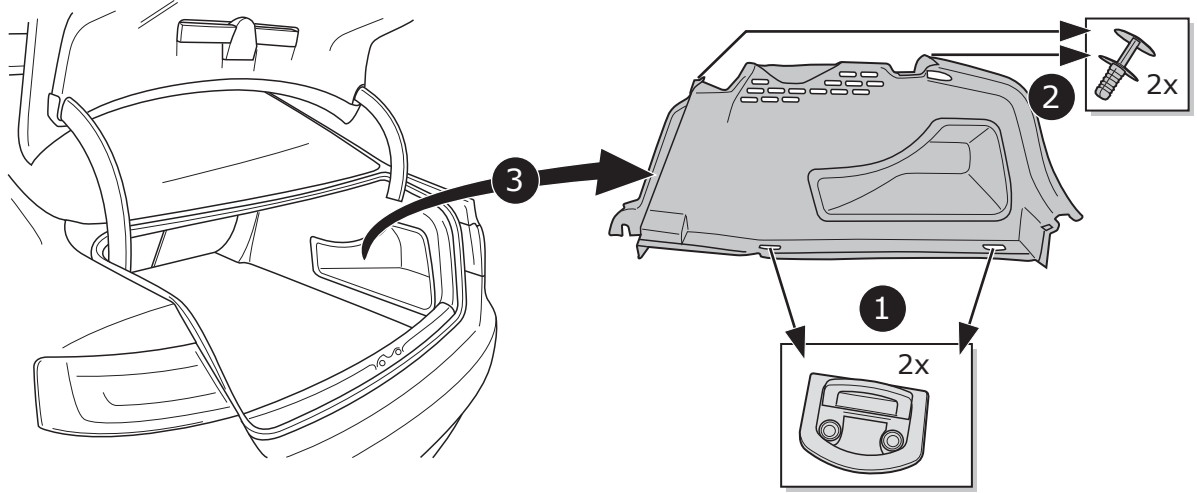


3



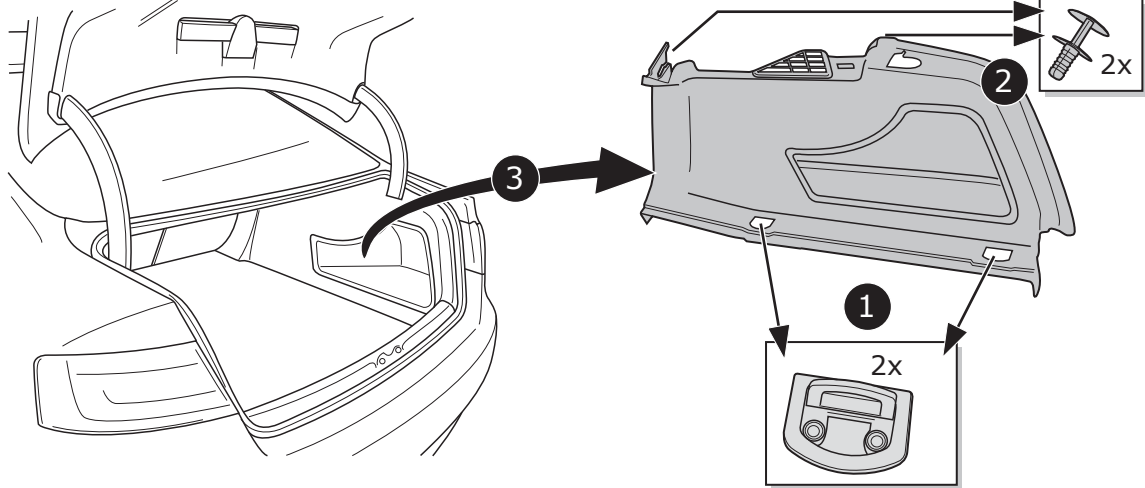
## A4 Sedan

4



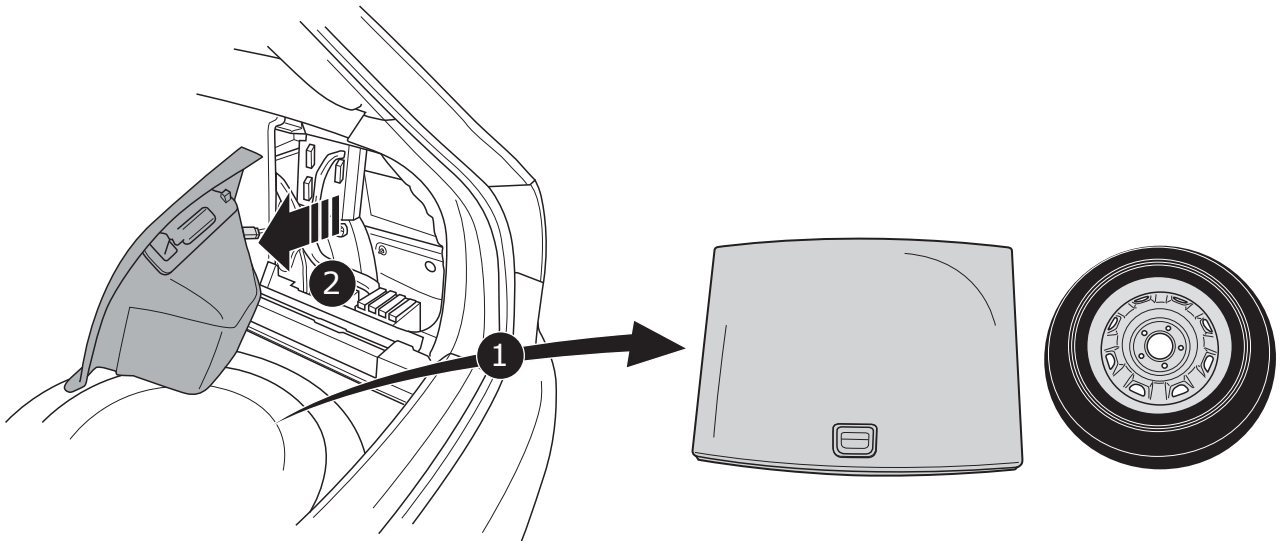
## A5

5



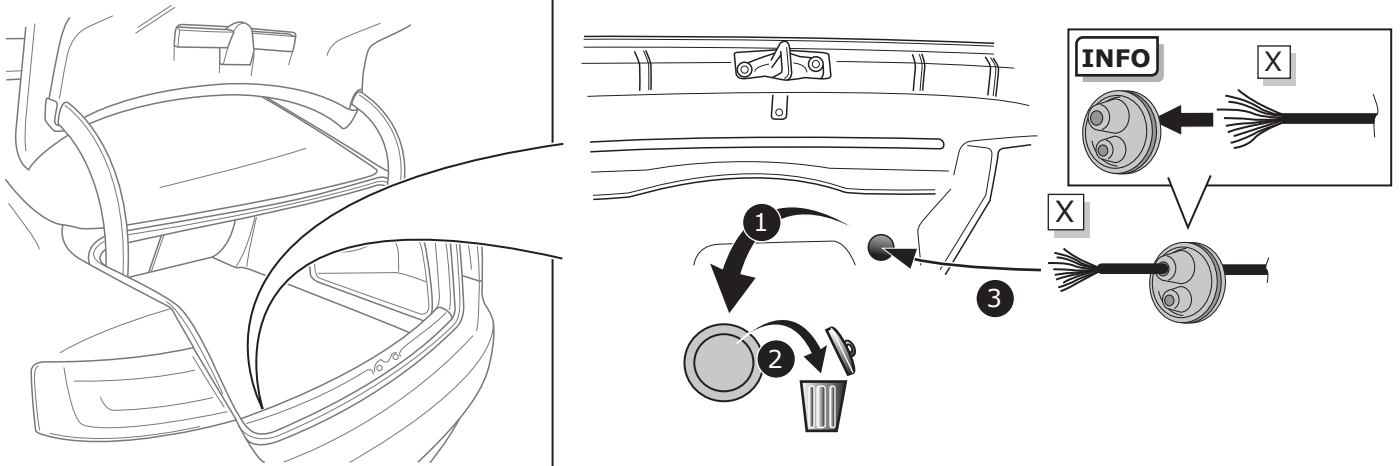
## A4 Avant / A4 Allroad

6



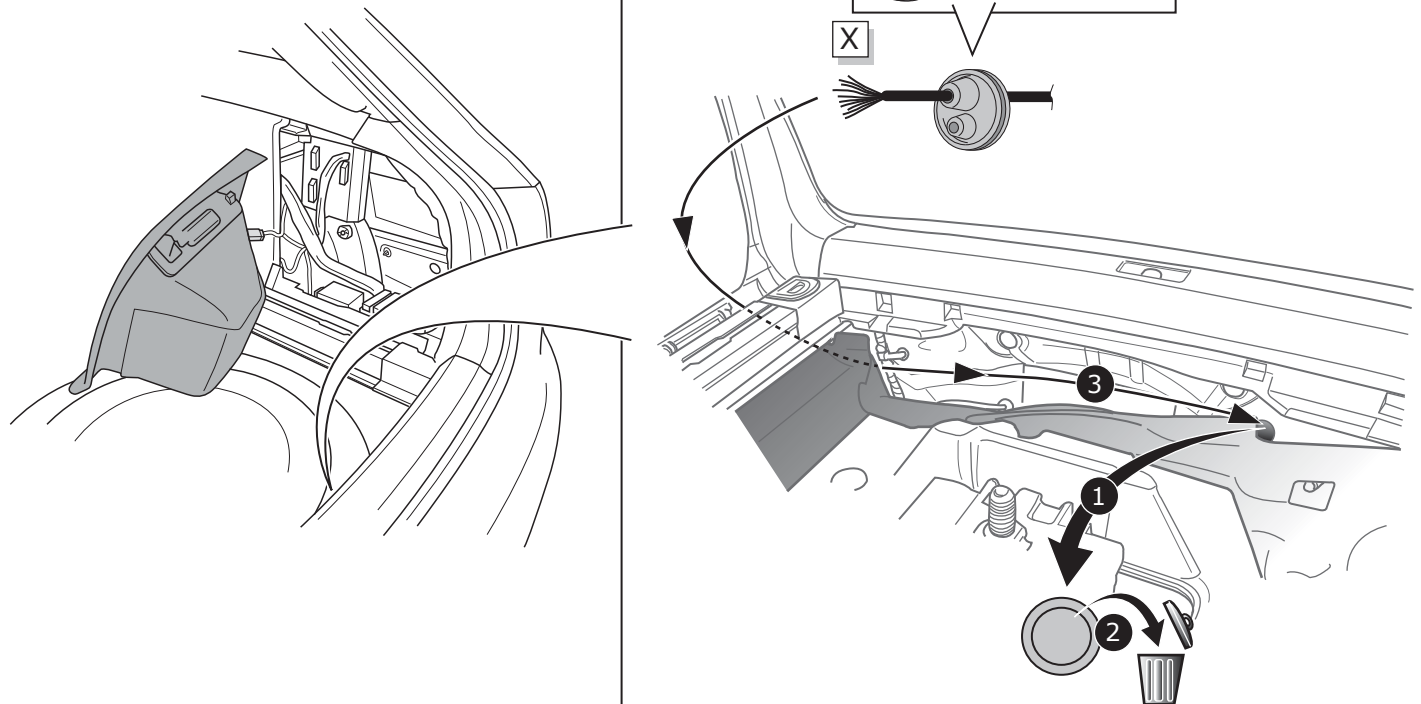
A4 Sedan / A5

7



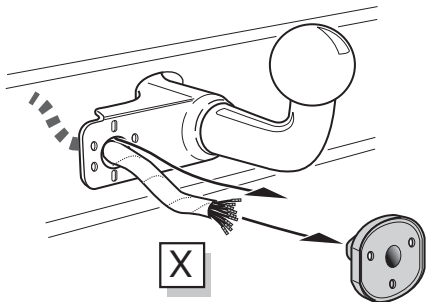
A4 Avant / A4 Allroad

8

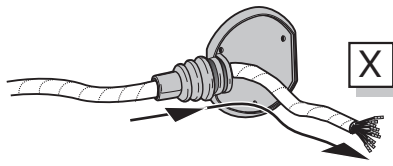


**A**

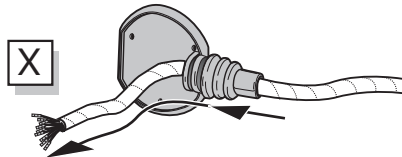
Option 1



Option 2



Option 3



**INFO**

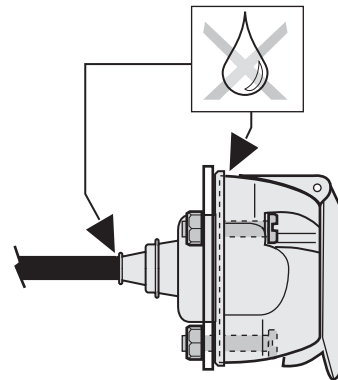
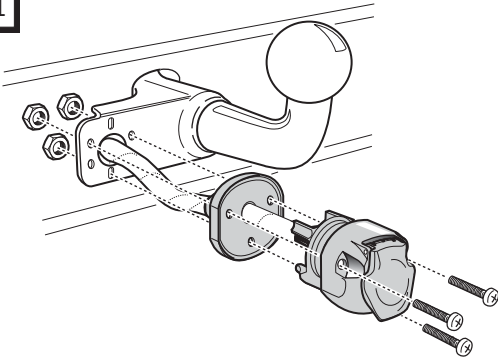
SOCKET CONNECTION



Pag. 10

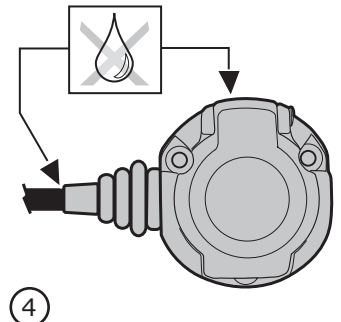
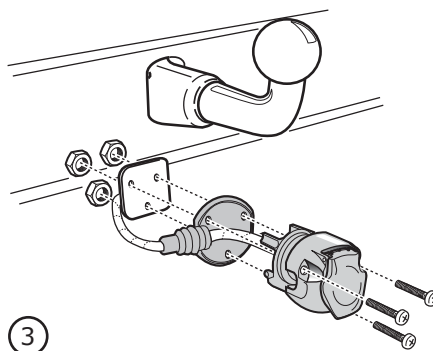
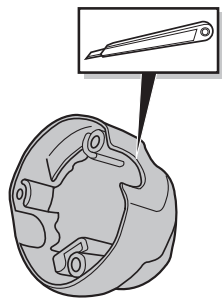
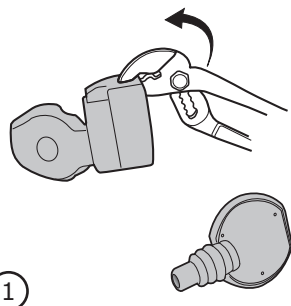
**B**

Option 1



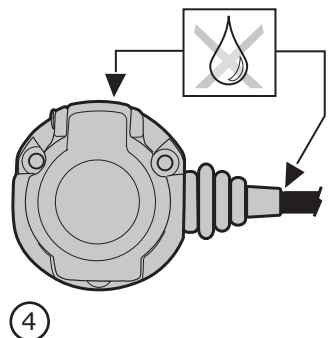
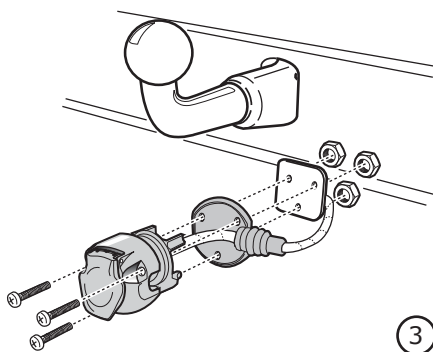
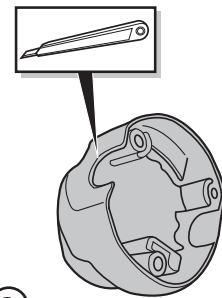
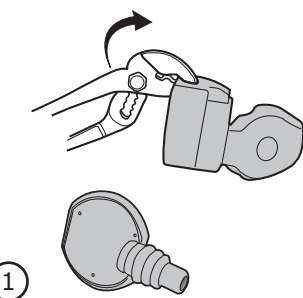
**C**

Option 2

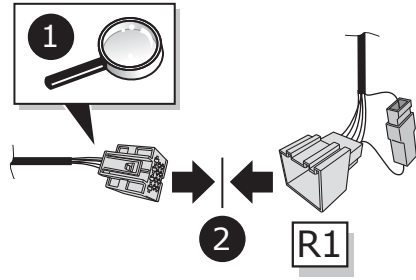
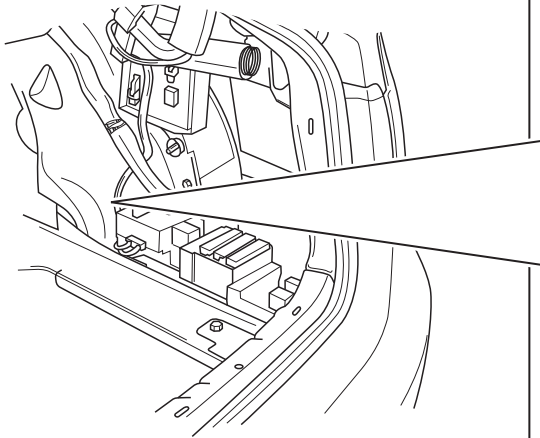


**D**

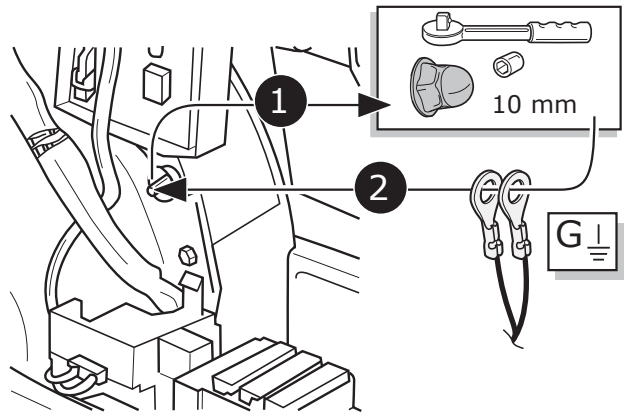
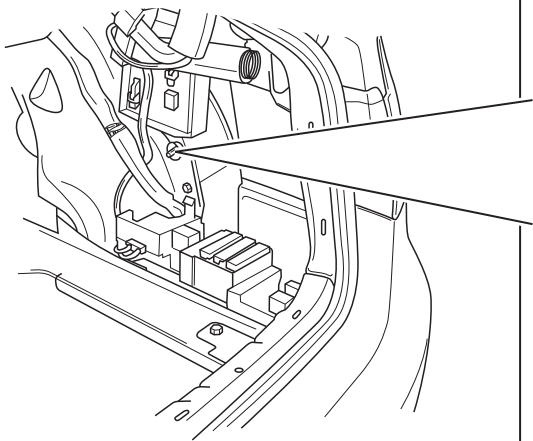
Option 3



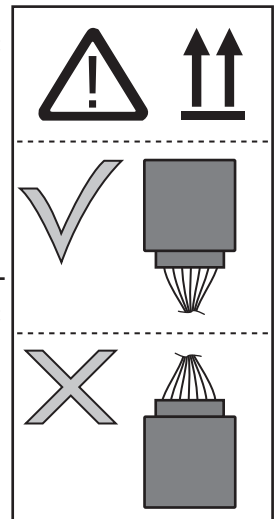
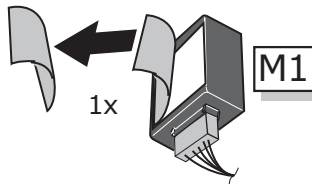
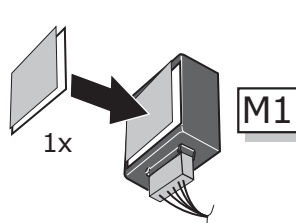
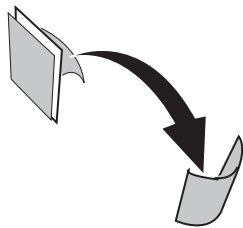
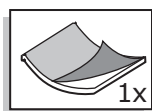
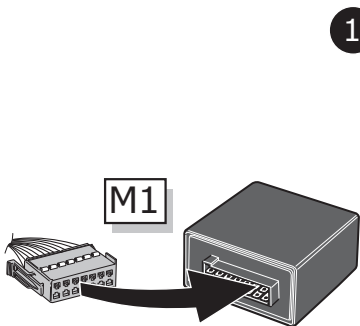
9



10

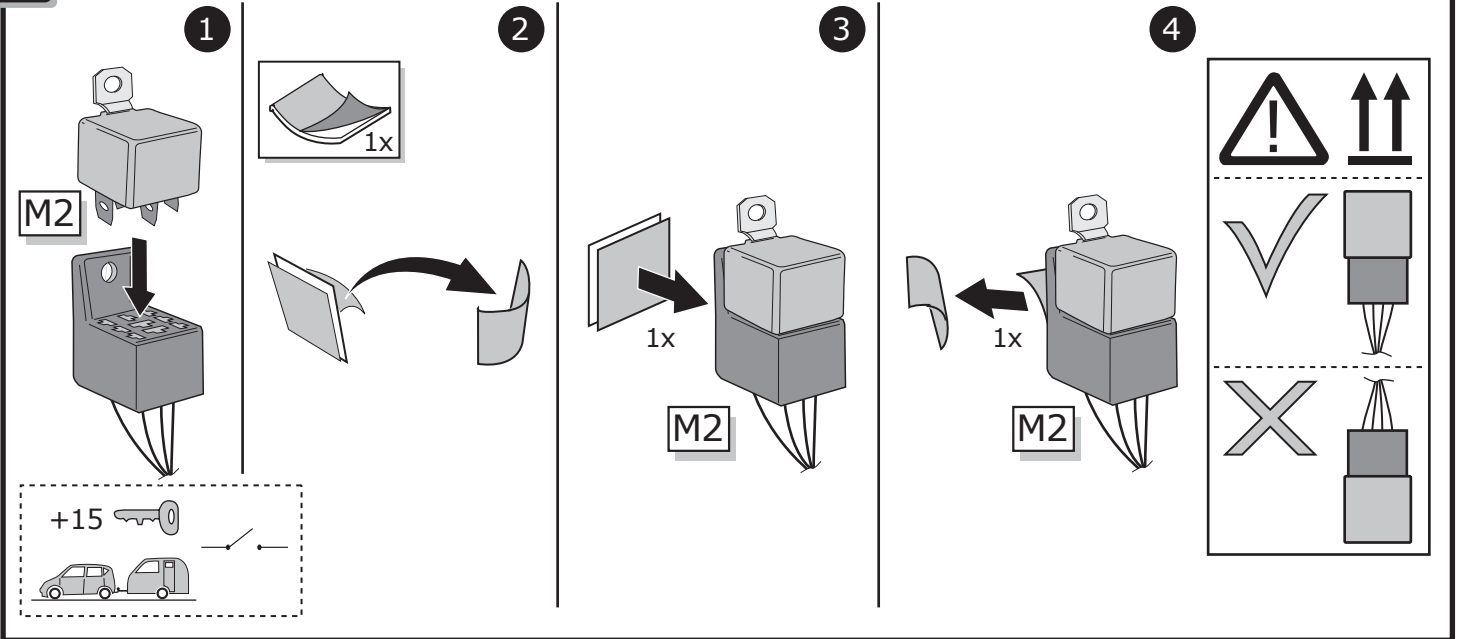


11

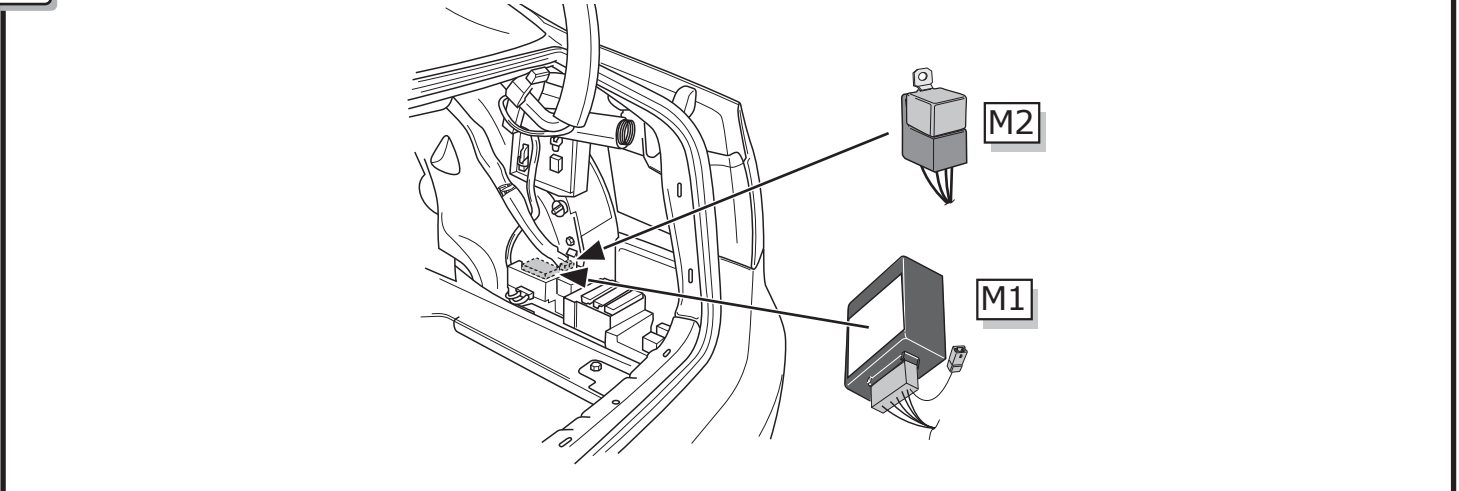




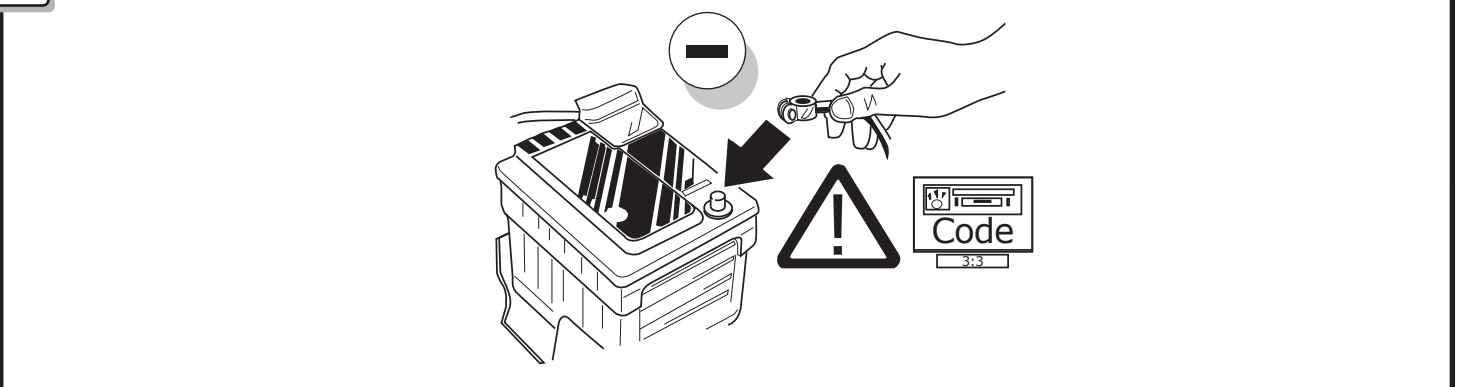
12



13



14



15

With a VAG Service tester with the help of SVM code '050200' the software of the vehicle must be adjusted to trailer coupling converted D12.

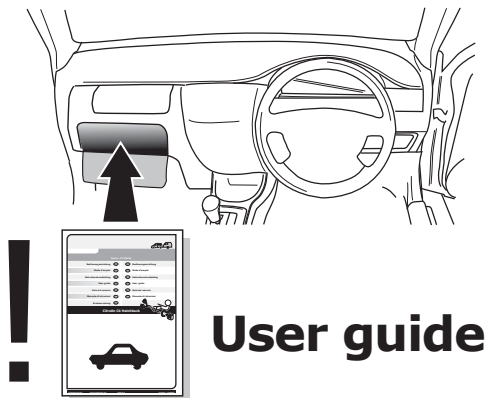
16

**!** TEST ALL THE CIRCUITS WITH A TEST DEVICE WITH THE CORRECT POWER LOAD FOR EACH FUNCTION. A TEST DEVICE WITH LED'S CANNOT BE USED FOR THIS PURPOSE.

INFO

REINSTALL TRIM.

17



INFO

SOCKET CONNECTION

|               |             |      |       |             |          |           |            |       |            |            |       |          |       |
|---------------|-------------|------|-------|-------------|----------|-----------|------------|-------|------------|------------|-------|----------|-------|
| DIN/ISO 11446 |             |      |       |             |          |           |            |       |            |            |       | —        |       |
|               | 1/L         | 2    | 3/31  | 4/R         | 5/58-R   | 6/54      | 7/58-L     | 8     | 9          | 10         | 11    | 12       | 13    |
| Pmax          | 21W         | 21W  |       | 21W         | 42W      | 3x21W     | 42W        | 21W   | 180W/15Amp | 180W/15Amp |       |          |       |
| Colour        | Black/White | Blue | Brown | Black/Green | Grey/Red | Black/Red | Grey/Black | Black | Red        | Yellow     | Brown | Red/Blue | Brown |