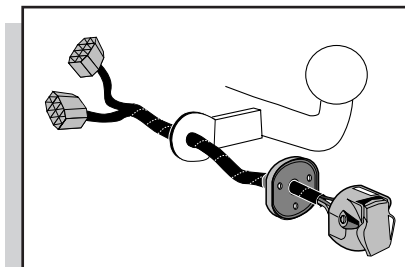


Einbauanleitung Elektrosatz
Anhängervorrichtung mit 12-N Steckdose
lt. DIN/ISO Norm 1724

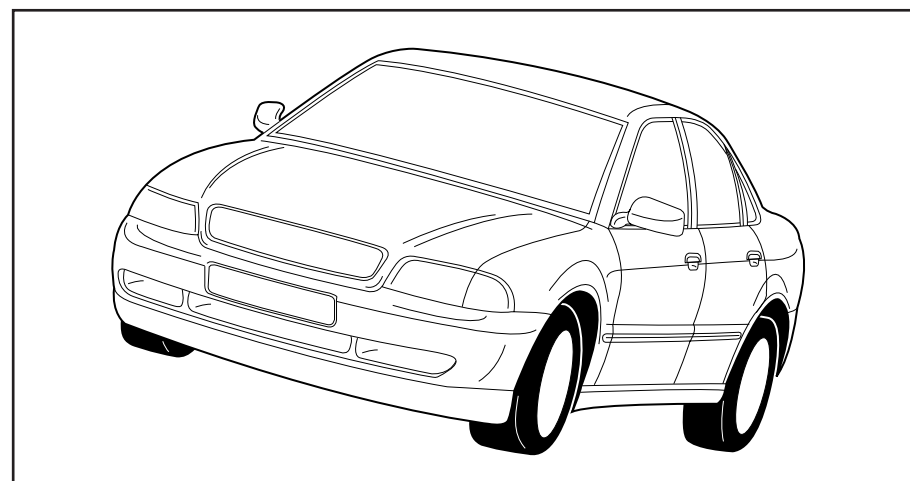
Instructions de montage du faisceau
électrique pour crochet d'attelage
conforme à la norme
DIN/ISO 1724 prise 12-N

Fitting instructions electric wiringkit
towbar with 12-N socket up to
DIN/ISO norm 1724

Montage-handleiding elektrokabelset voor
trekhaak met 12-N contactdoos
vlgs. DIN/ISO norm 1724



AUDI A4 with check control 1995-



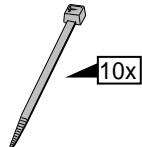
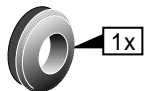
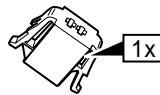
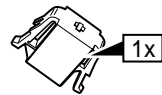
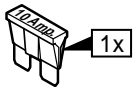
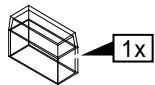
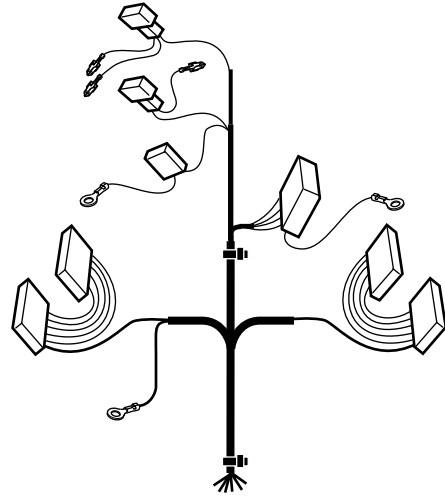
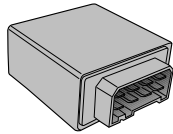
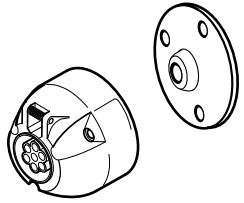
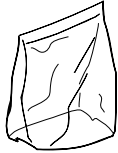
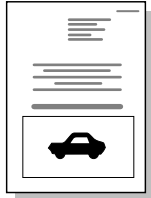
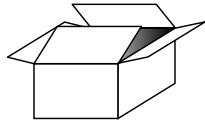
Bestel Nr.: VAG-036-B

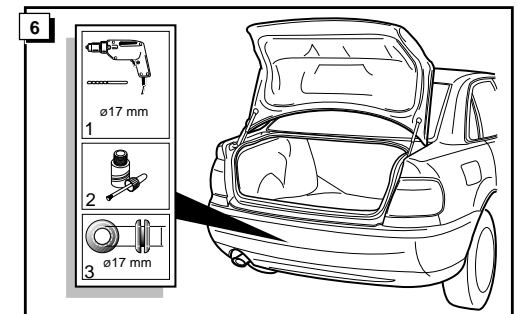
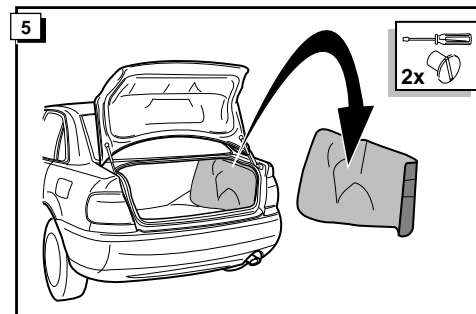
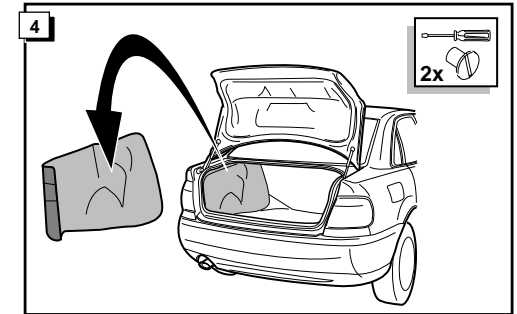
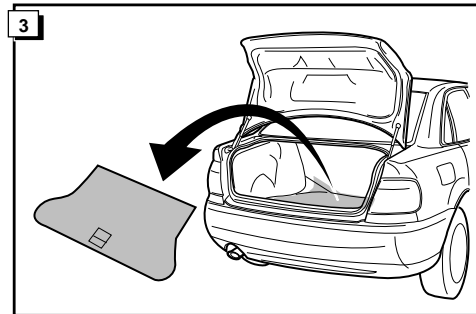
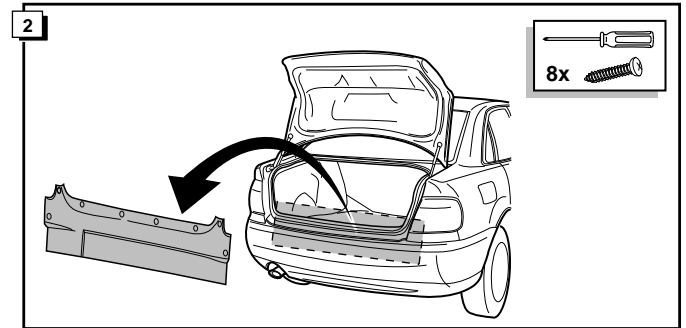
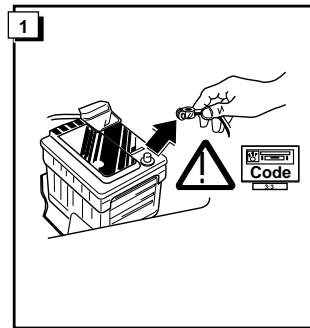
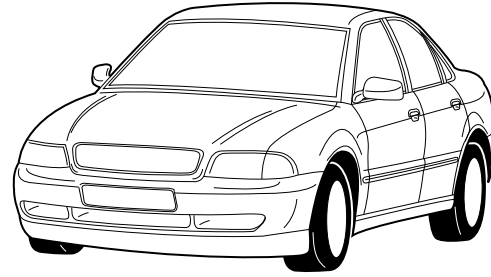
* Teilliste

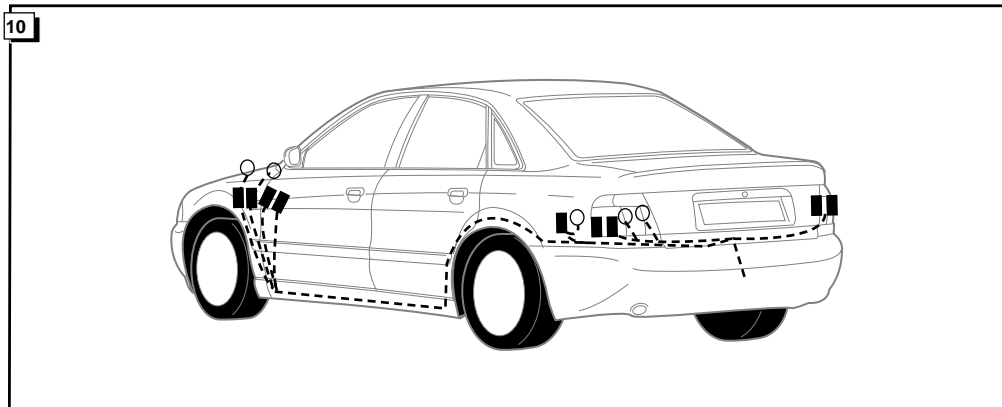
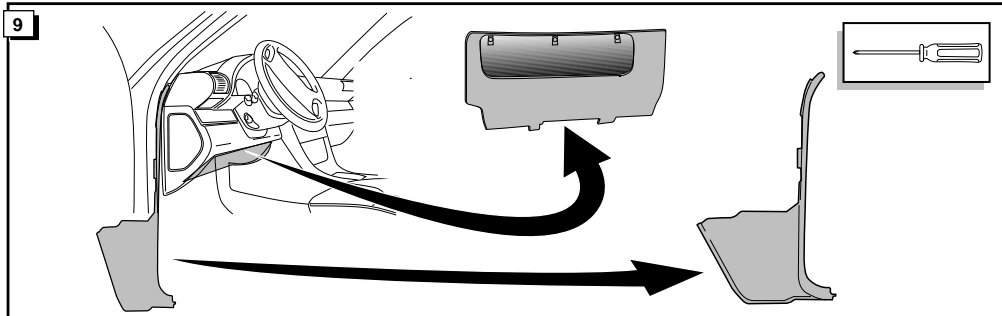
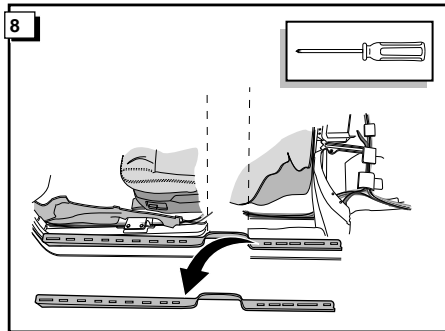
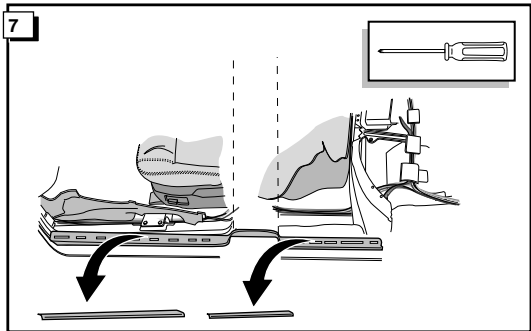
* Liste de pieces

* Part list

* Onderdelenlijst







11

KNIPPERLICHT LINKS
 L.H. INDICATOR
 BLINKER LINKS
 CLIGNOTANT GAUCHE

REMLICHTEN
 BRAKELICHTS
 BREMSLEUCHE
 FEUX DE STOP

ACHTERLICHT LINKS
 L.H. REARLIGHT
 SCHLUßLEUCHE LINKS
 FEU ARRIERE GAUCHE

MASSA
 EARTH
 MASSE
 MASSE

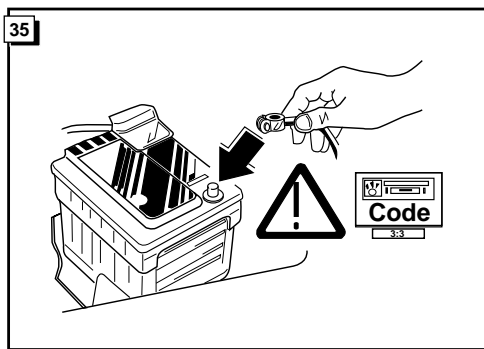
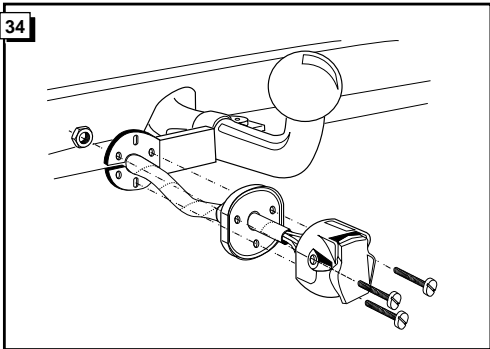
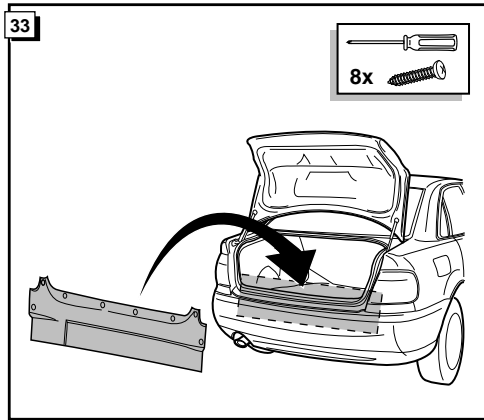
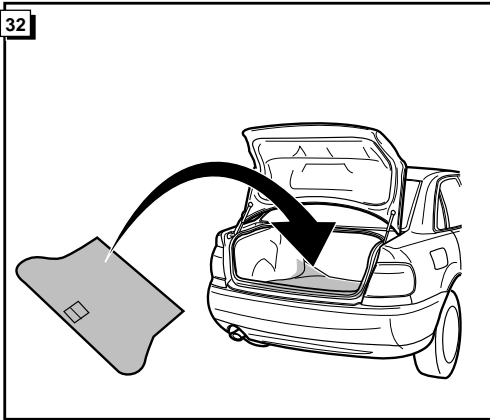
KNIPPERLICHT RECHTS
 R.H. INDICATOR
 BLINKER RECHTS
 CLIGNOTANT DROIT

ACHTERLICHT RECHTS
 R.H. REARLIGHT
 SCHLUßLEUCHE RECHTS
 FEU ARRIERE DROIT

	NL	GB	D	FR
1 = L	GEEL	YELLOW	GELB	JAUNE
2 = 54-G	BLAUW	BLUE	BLAU	BLEU
3 = 31	WIT	WHITE	WEIß	BLANC
4 = R	GROEN	GREEN	GRÜN	VERT
5 = 58-R	BRUIN	BROWN	BRAUN	MARRON
6 = 54	ROOD	RED	ROT	ROUGE
7 = 58-L	ZWART	BLACK	SCHWARZ	NOIR
8 = 58-b	GRIJS	GREY	GRAU	GRIS

37

CONTROLEER FUNCTIES !
CHECK FUNCTIONS !
FUNKTIONEN KONTROLIEREN !
CONTRÔLER LES FONCTIONS !



36

! CONTROLEER FUNCTIES !
! CHECK FUNCTIONS !
! FUNKTIONEN KONTROLIEREN !
! CONTRÔLER LES FONCTIONS !

