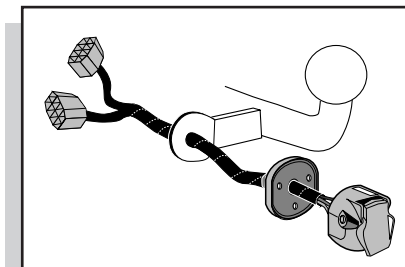


Einbauanleitung Elektrosatz  
Anhängervorrichtung mit 12-N Steckdose  
lt. DIN/ISO Norm 1724

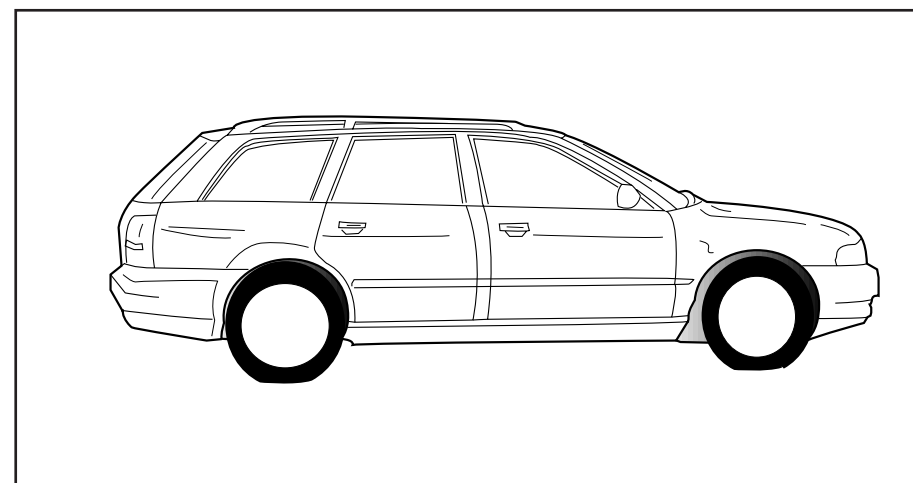
Instructions de montage du faisceau  
électrique pour crochet d'attelage  
conforme à la norme  
DIN/ISO 1724 prise 12-N

Fitting instructions electric wiringkit  
towbar with 12-N socket up to  
DIN/ISO norm 1724

Montage-handleiding elektrokabelset voor  
trekhaak met 12-N contactdoos  
vlgs. DIN/ISO norm 1724

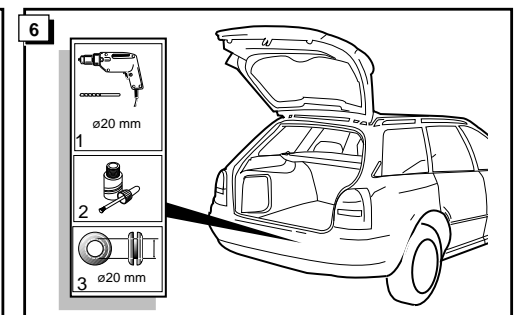
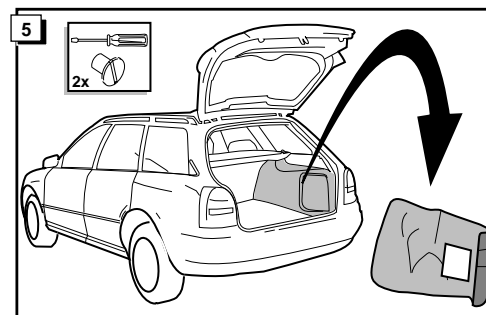
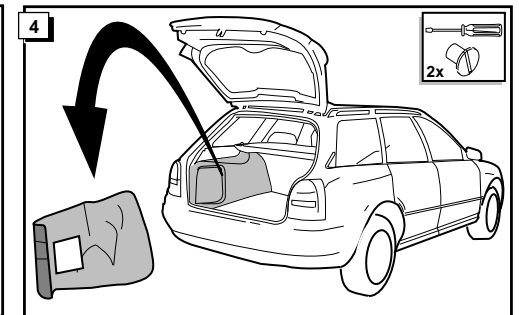
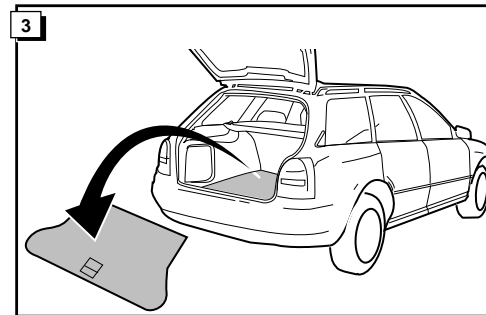
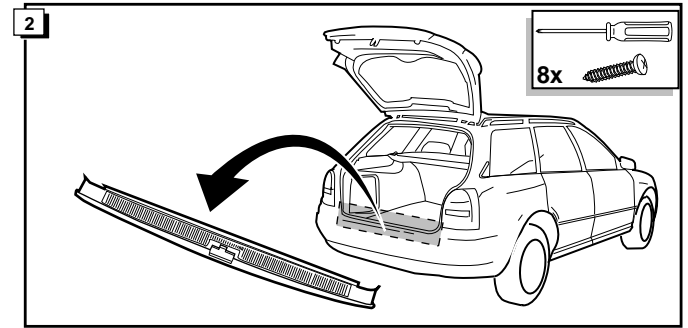
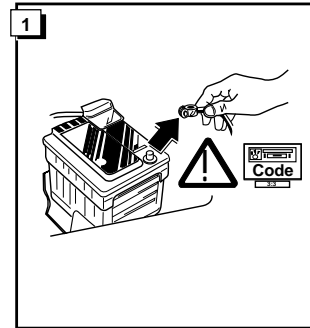
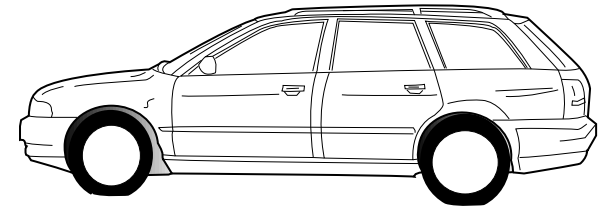


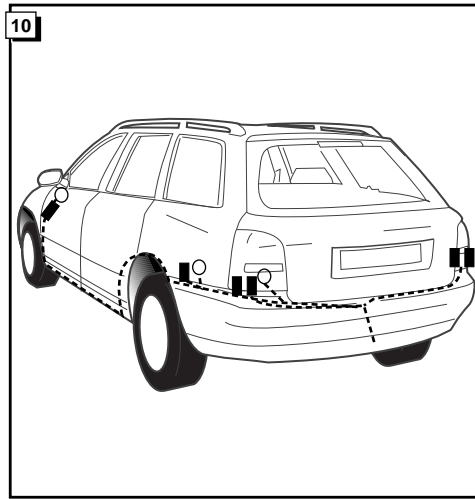
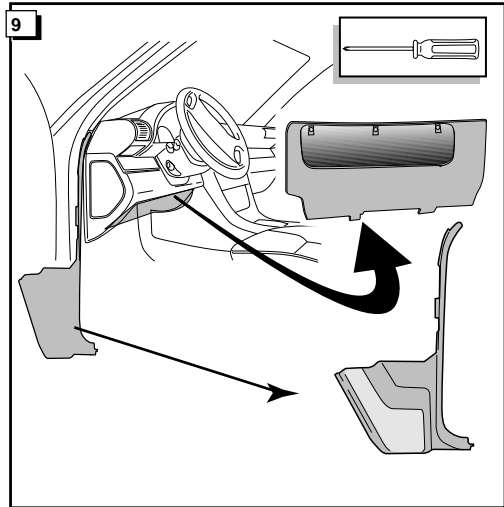
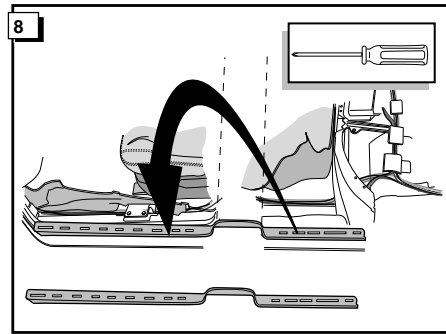
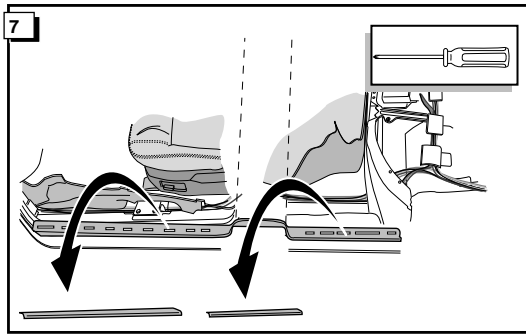
## AUDI A4 AVANT 1995-



Bestel Nr.: VAG-039-B







**11**

KNIPPERLICHT LINKS  
L.H. INDICATOR  
BLINKER LINKS  
CLIGNOTANT GAUCHE

REMLICHTEN  
BRAKELICHTS  
BREMSLEUCHTE  
FEUX DE STOP

STOP

ACHTERLICHT LINKS  
L.H. REARLIGHT  
SCHLUßLEUCHTE LINKS  
FEU ARRIERE GAUCHE

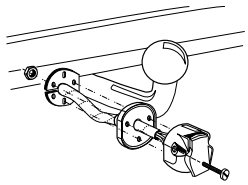
MASSA  
EARTH  
MASSE  
MASSE

KNIPPERLICHT RECHTS  
R.H. INDICATOR  
BLINKER RECHTS  
CLIGNOTANT DROIT

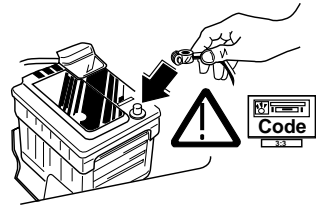
ACHTERLICHT RECHTS  
R.H. REARLIGHT  
SCHLUßLEUCHTE RECHTS  
FEU ARRIERE DROIT

	NL	GB	D	FR
1 = L	GEEL	YELLOW	GELB	JAUNE
2 = 54-G	BLAUW	BLUE	BLAU	BLEU
3 = 31	WIT	WHITE	WEIß	BLANC
4 = R	GROEN	GREEN	GRÜN	VERT
5 = 58-R	BRUIN	BROWN	BRAUN	MARRON
6 = 54	ROOD	RED	ROT	ROUGE
7 = 58-L	ZWART	BLACK	SCHWARZ	NOIR
8 = 58-b	GRIJS	GREY	GRAU	GRIS

29



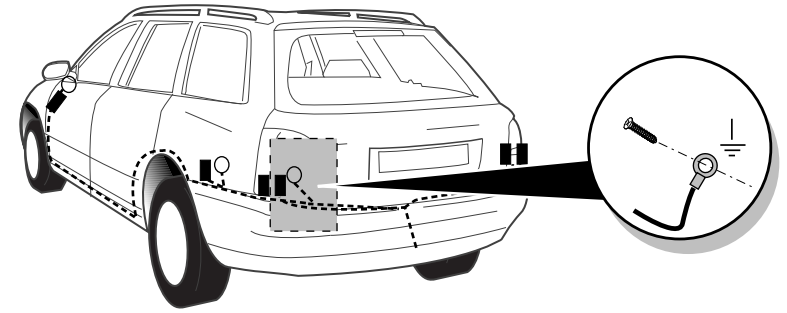
30



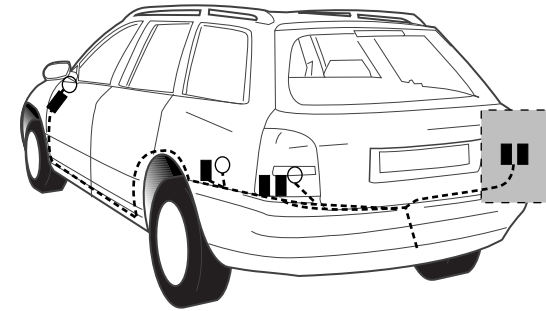
31

**!** **CONTROLEER FUNCTIES !**  
**!** **CHECK FUNCTIONS !**  
**!** **FUNKTIONEN KONTROLIEREN !**  
**!** **CONTRÔLER LES FONCTIONS !**

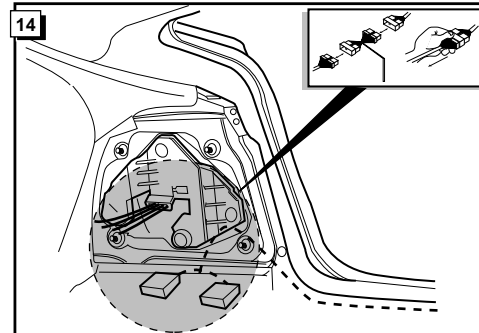
12



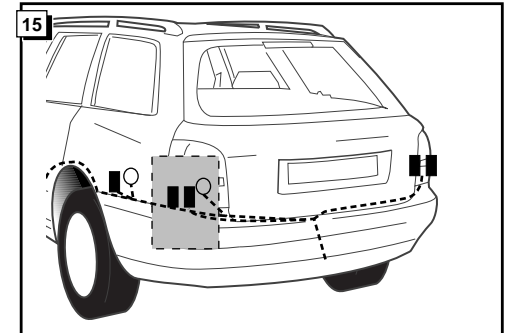
13



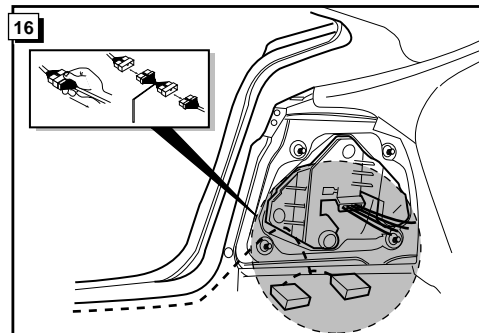
14



15



16



17

